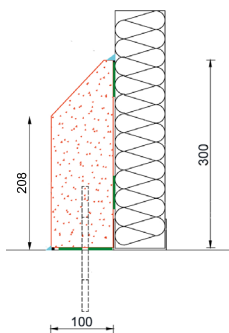


Polysto kerbs 'R'-model

R-models are prefabricated full core kerbs with sloped top. Available in a SaniCoat or a natural version. The kerbs consist of a water repellent durable CleanRock mass. The SaniCoat version is finished food-safe with a smooth Sanicoat (Polyester gelcoat). Including matching accessories; prefabricated internal and external corners and end-pieces.

Waterproof bonding using Polysto Hard Fix Glue (Hybrid Polymere) . Finishing of the joints using Polysto Food Safe Sealant or a chemical welding HygiSeal. For SaniCoat kerbs the color white is used, for Natural kerbs RAL9002 is used.
Optional chemical anchorage of Ø10 - 150 mm or 200 mm with Polysto 2-component Chemfix.

IP30R(na)



IMPACT CLASS 4 (not anchored)

against electric pallet trucks up to max. 1500 Kg total weight

IMPACT CLASS 5 (anchored)

against engine driven pallet trucks and vorklifts up to max. 4000 Kg total weight and max. speed of 5 Km/h when anchored

Technical info

	Kerb	Corner internal/ external	End piece right/ left
Length	1.500 mm	2 x 500 mm	500 mm
Height	300 mm	300 mm	300 mm
Thickness	100 mm	100 mm	100 mm
Weight	84 kg	56 kg	28 kg
Amount / pallet	18 m	12 pc	12 R & 12 L
Pallet size	155 x 65 x 70cmH	120 x 80 x 70cmH	120 x 80 x 70cmH
Pallet weight	+/- 1.050 kg	+/- 700 kg	+/- 700 kg
Temperature resistance	-35°C - +85°C (long exposure)		

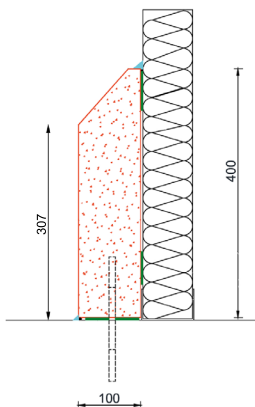
Average consumption of (per meter)

Food Safe sealant or HygiSeal white or RAL9002	205 cc
Food Safe sealant transparent	200 cc
Hard Fix Glue	600 cc
Chemfix	150 cc

Installation m/day (8h) with 2 installers

Food Safe Sealant	40 meter
HygiSeal	30 meter

IP40R(na)



IMPACT CLASS 4 (not anchored)

against electric pallet trucks up to max. 1500 Kg total weight

IMPACT CLASS 5 (anchored)

against engine driven pallet trucks and vorklifts up to max. 4000 Kg total weight and max. speed of 5 Km/h when anchored

Technical info

	Kerb	Corner internal/ external	End piece right/ left
Length	1.170 mm	2 x 1.170 mm	1.170 mm
Height	400 mm	400 mm	400 mm
Thickness	100 mm	100 mm	100 mm
Weight	97 kg	194 kg	97 kg
Amount / pallet	14.04 m	6 pc	6 R & 6 L
Pallet size	120 x 80 x 70cmH	120 x 80 x 70cmH	120 x 80 x 70cmH
Pallet weight	+/- 1.160 kg	+/- 1.160 kg	+/- 1.160 kg
Temperature resistance	-35°C - +85°C (long exposure)		

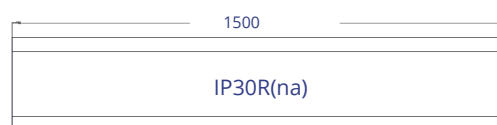
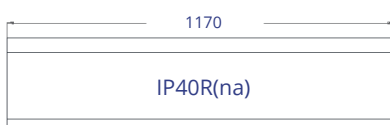
Average consumption of (per meter)

Food Safe sealant or HygiSeal white or RAL9002	215 cc
Food Safe sealant transparent	200 cc
Hard Fix Glue	650 cc
Chemfix	150 cc

Installation m/day (8h) with 2 installers

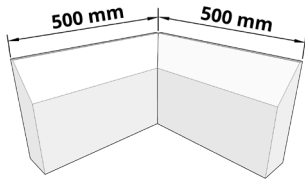
Food Safe Sealant	40 meter
HygiSeal	30 meter

Kerb



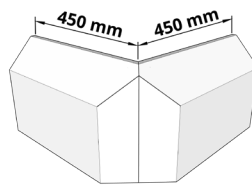
IP30R(na)

Internal corner



IP40R(na) = 2 x 1170 mm

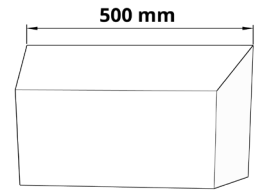
External corner



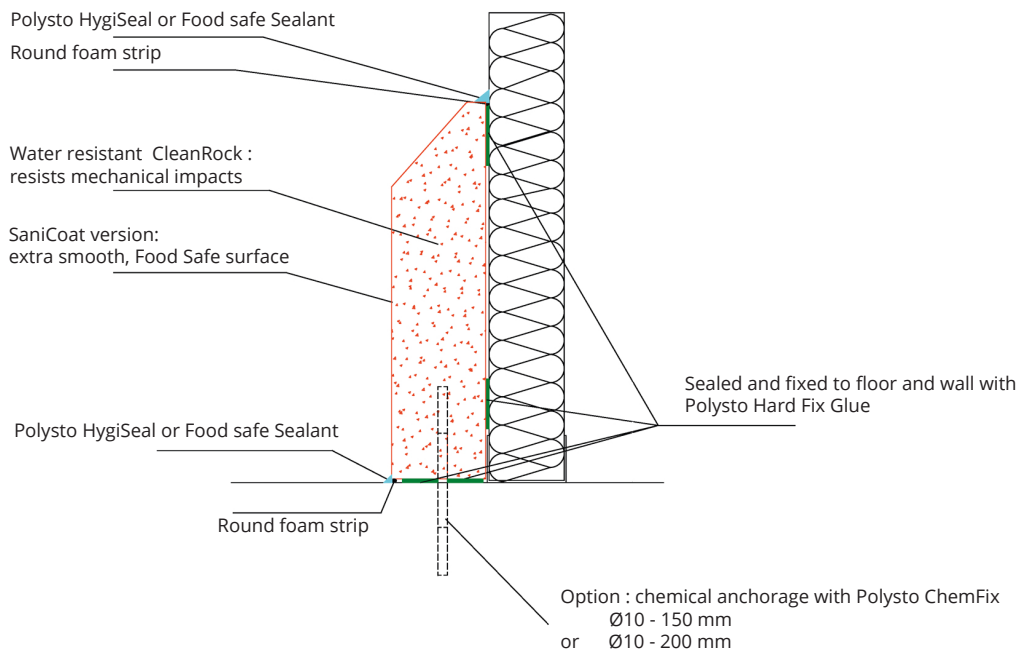
IP40R(na) = 2 x 1120 mm

IP30R(na)

End piece



IP40R(na) = 1170 mm



IP30R SaniCoat



IP40R SaniCoat



IP30R Natural



IP40R Natural

