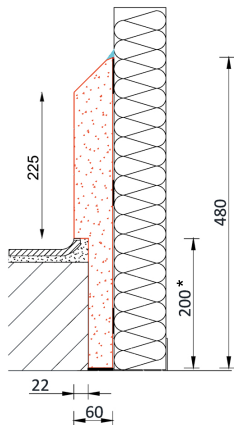


Polysto kerbs RBT-model

RBT-models are prefabricated full core kerbs with sloped top and rebate where a tiled floor can be mounted into the Polysto kerbs (seamless connection). Available in a SaniCoat or a natural version. The kerbs consist of a water repellent durable CleanRock mass. The SaniCoat version is finished food-safe with a smooth Sanicoat (Polyester gelcoat). Including matching accessories; prefabricated internal and external corners and end-pieces.

Waterproof bonding using Polysto Hard Fix Glue (Hybrid Polymere). Finishing of the joints using Polysto Food Safe Sealant or a chemical welding HygiSeal. For SaniCoat kerbs the color white is used, for Natural kerbs RAL9002 is used.

OP48RBT(na)



IMPACT CLASS 3

against manual palet truck up to max. 900 k total weight

Technical info

	Kerb	Corner internal / external	End piece right / left
Length	1.500 mm	2 x 500 mm	500 mm
Height	480 mm	480 mm	480 mm
Thickness	60 mm	60 mm	60 mm
Weight	82 kg	54,50 kg	27,25 kg
Amount / pallet	18 m	12 pc	12 R & 12 L
Pallet size	155 x 105 x 70cmH	120 x 80 x 70cmH	120 x 80 x 70cmH
Pallet weight	+/- 1.000 kg	+/- 680 kg	+/- 680 kg
Temperature resistance	-35°C - +85°C (long exposure)		

Average consumption of (per meter)

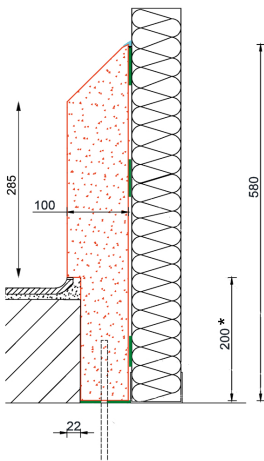
Food Safe sealant or HygiSeal White or RAL9002	140 cc
Hard Fix Glue	600 cc
Chemfix	150 cc

Installation m/day (8h) with 2 installers

Food Safe Sealant	40 meter
HygiSeal	35 meter

*The height of the rebate can be adjusted on request between 200 mm and 30 mm.

IP58RBT(na)



IMPACT CLASS 4 (not anchored)

against electric palet trucks up to max. 1500 Kg total weight

IMPACT CLASS 5 (anchored)

against engine driven palet trucks and vorklifts up to max. 4000 Kg total weight and max. speed of 5 Km/h when anchored

Technical info

	Kerb	Corner internal / external	End piece right / left
Length	1.500 mm	2 x 500 mm	500 mm
Height	580 mm	580 mm	580 mm
Thickness	100 mm	100 mm	100 mm
Weight	159 kg	106 kg	53 kg
Amount / pallet	9 m	6 pc	6 R & 6 L
Pallet size	155 x 65 x 70cmH	120 x 80 x 70cmH	120 x 80 x 70cmH
Pallet weight	+/- 960 kg	+/- 660 kg	+/- 660 kg
Temperature resistance	-35°C - +85°C (long exposure)		

Average consumption of (per meter)

Food Safe sealant or HygiSeal White or RAL9002	150 cc
Hard Fix Glue	800 cc
Chemfix	150 cc

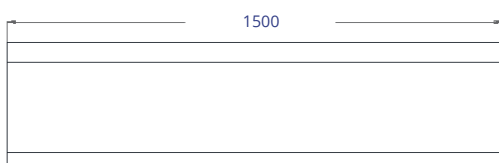
Installation m/day (8h) with 2 installers

Food Safe Sealant	30 meter
HygiSeal	25 meter

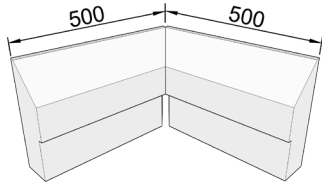
Optional chemical anchorage of Ø10 - 150 mm or 200 mm with Polysto 2-component Chemfix.

*The height of the rebate can be adjusted on request between 200 mm and 30 mm.

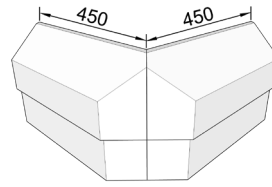
Kerb



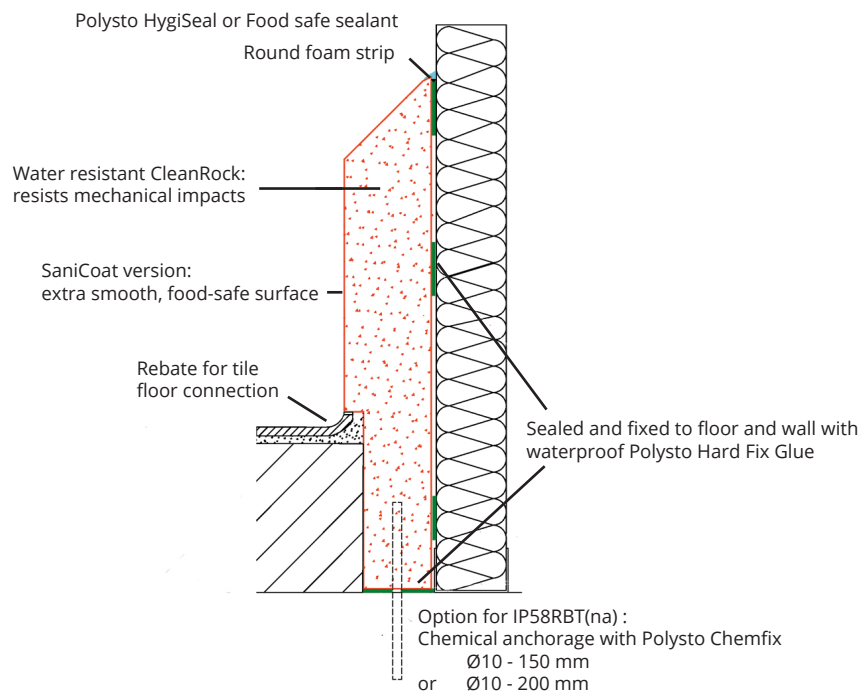
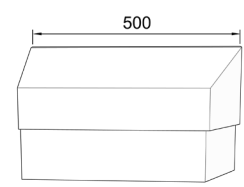
Internal corner



External corner



End piece



IP58RBT Natural

